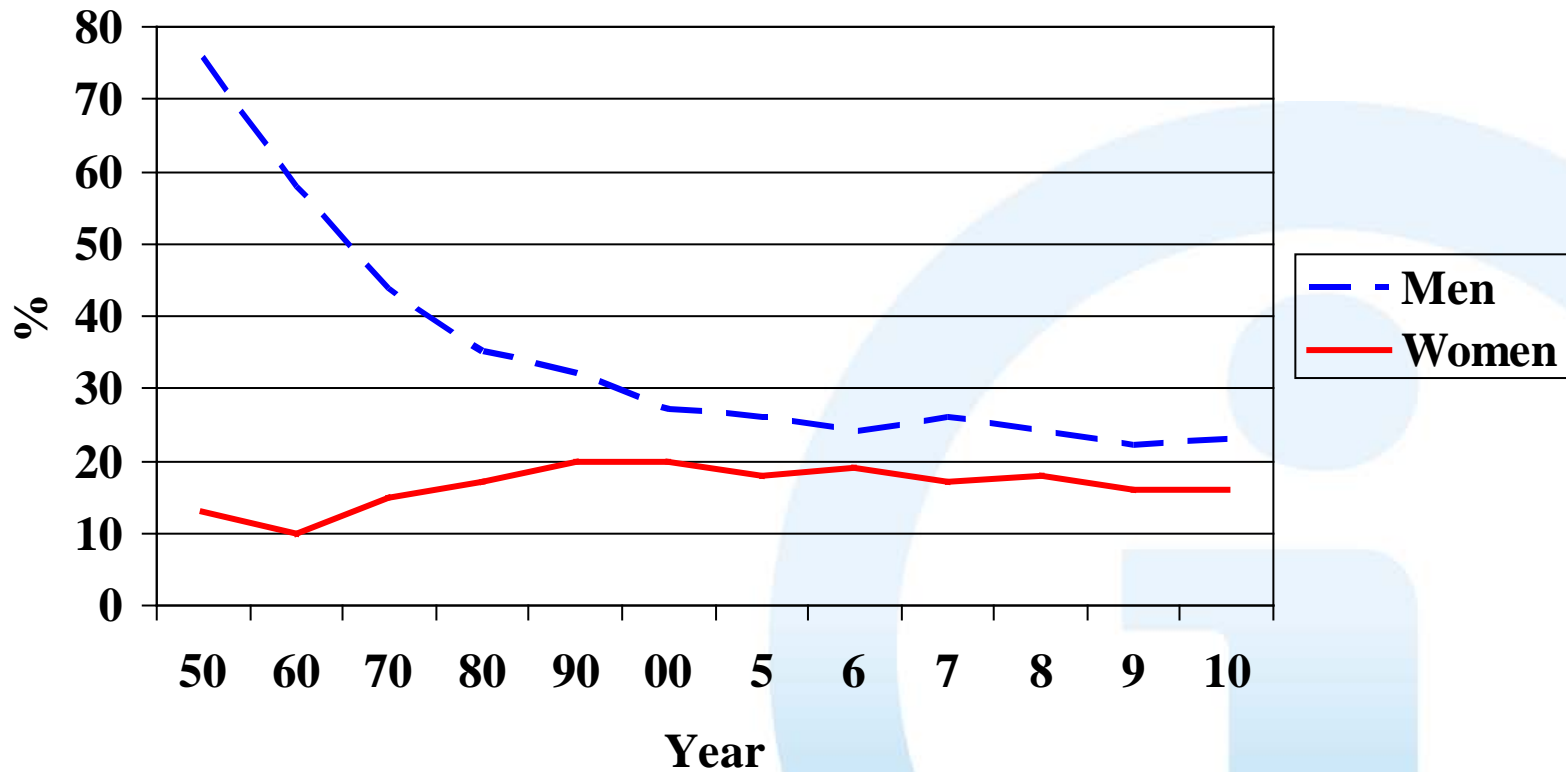


# SMOKING IN FINLAND

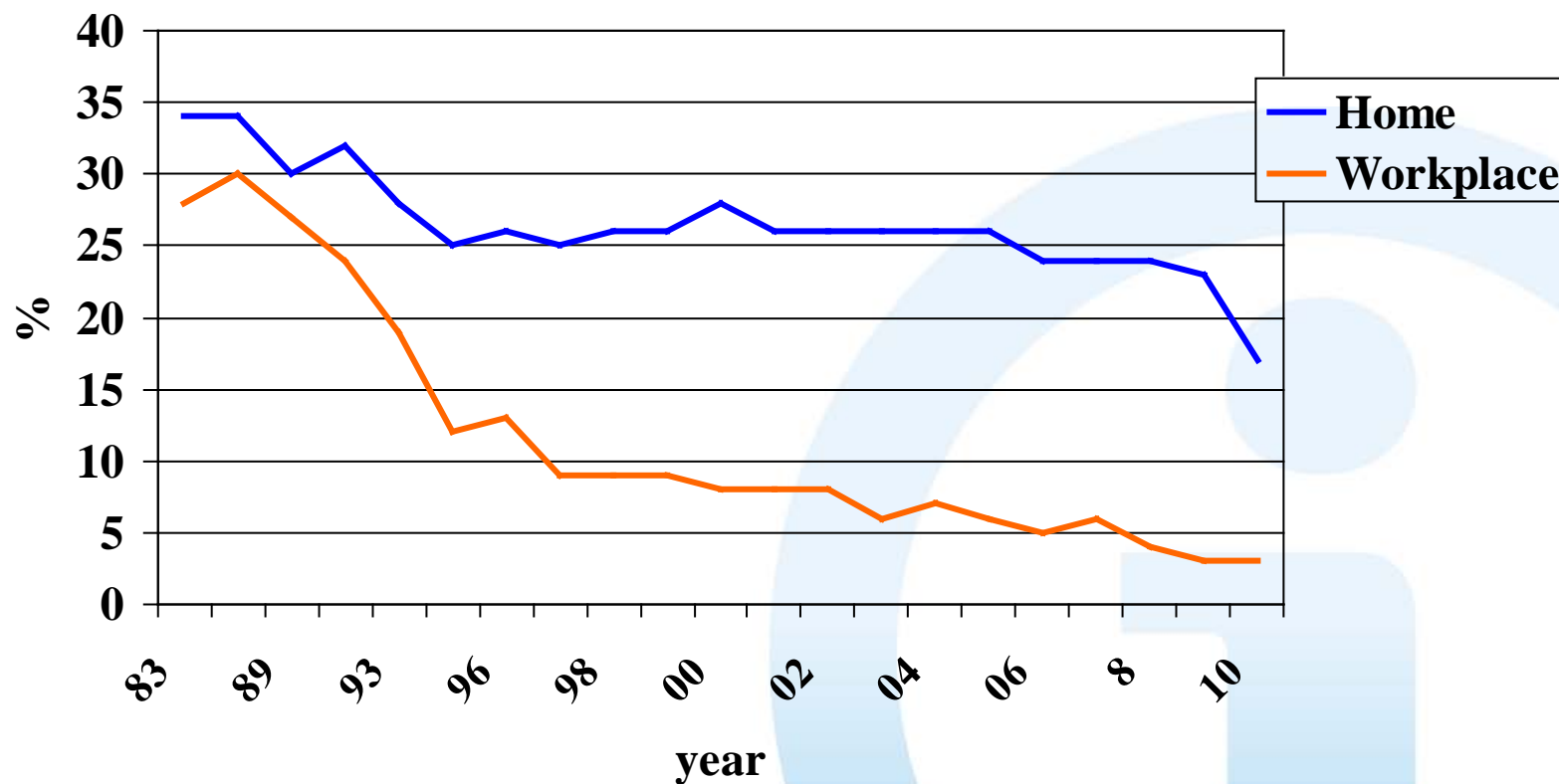
## Proportion of daily smokers (%) 1950-2010, age 15-64



Sources: \* Years -50, -60 and -70: Finnish Gallup

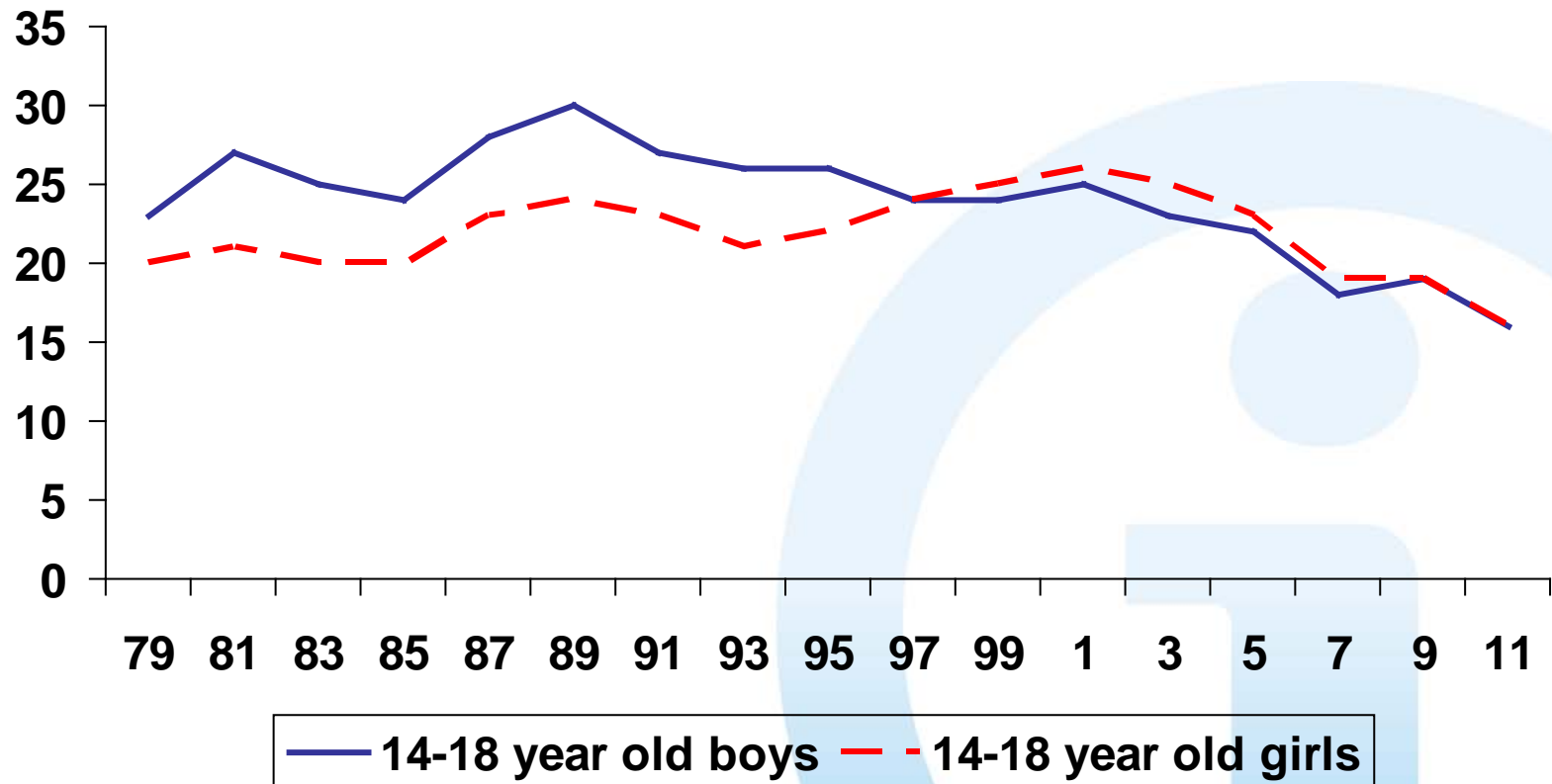
The National Institute for Health and Welfare (THL) . Health Behaviour and Health among the Finnish Adult Population, Spring 2010. Report 15/2011.

# Exposure to environmental tobacco smoke in Finland 1983 - 2010



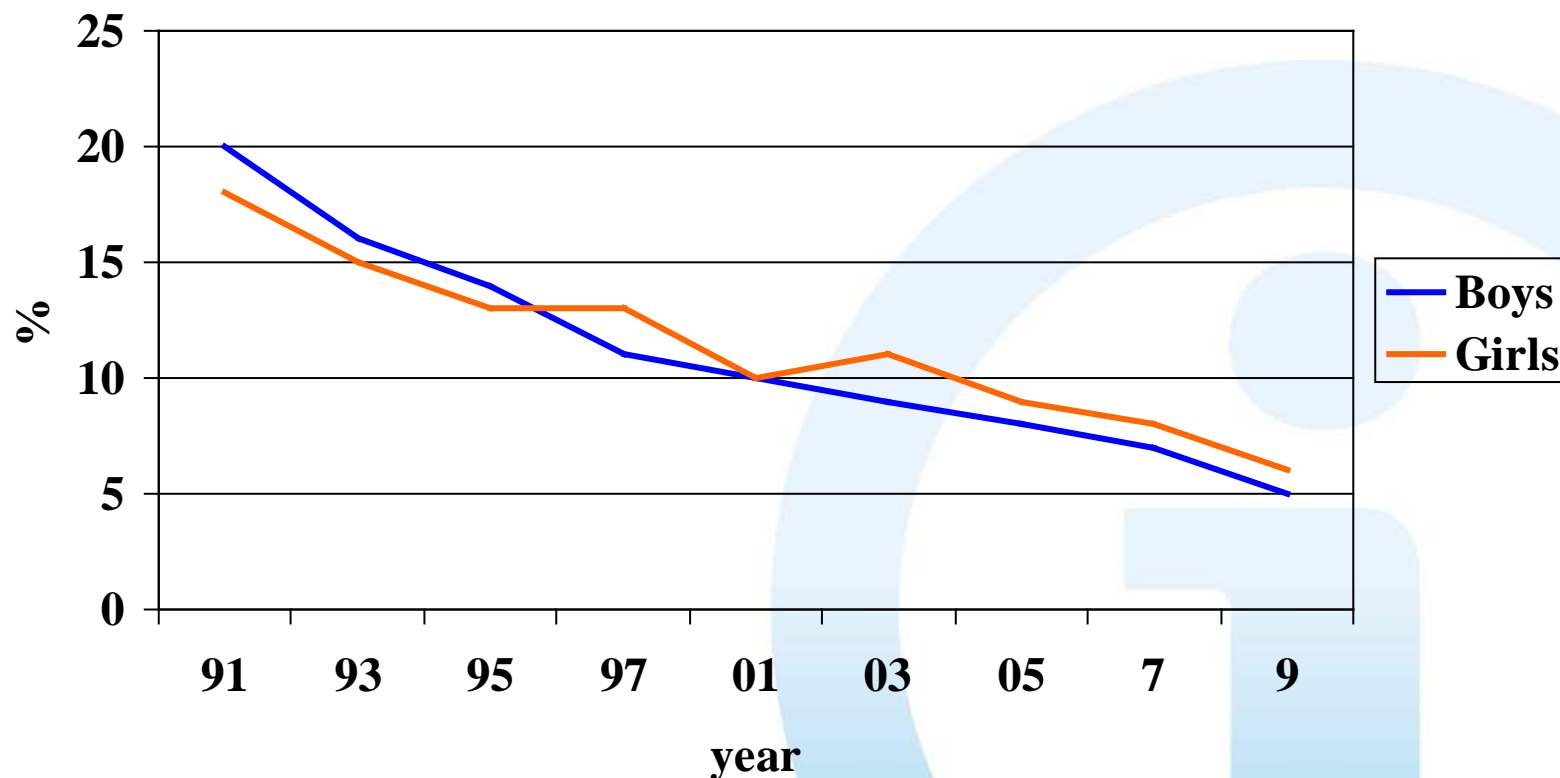
The National Institute for Health and Welfare (THL) . Health Behaviour and Health among the Finnish Adult Population, Spring 2010.  
Report 2/2011.

## Proportion of daily smokers (%) among young people 1979 - 2011



Raisamo, Pere, Lindfors, Tiirikainen, Rimpelä. The Adolescent Health and Lifestyle Survey 2011.

# Percentage of 12-18-year olds exposed daily to tobacco smoke for at least one hour in 1991-2009, age and sex-adjusted



Rimpelä A, Rainio, Huhtala, Lavikainen, Pere, Rimpelä M. The Adolescent Health and Lifestyle Survey 2009.