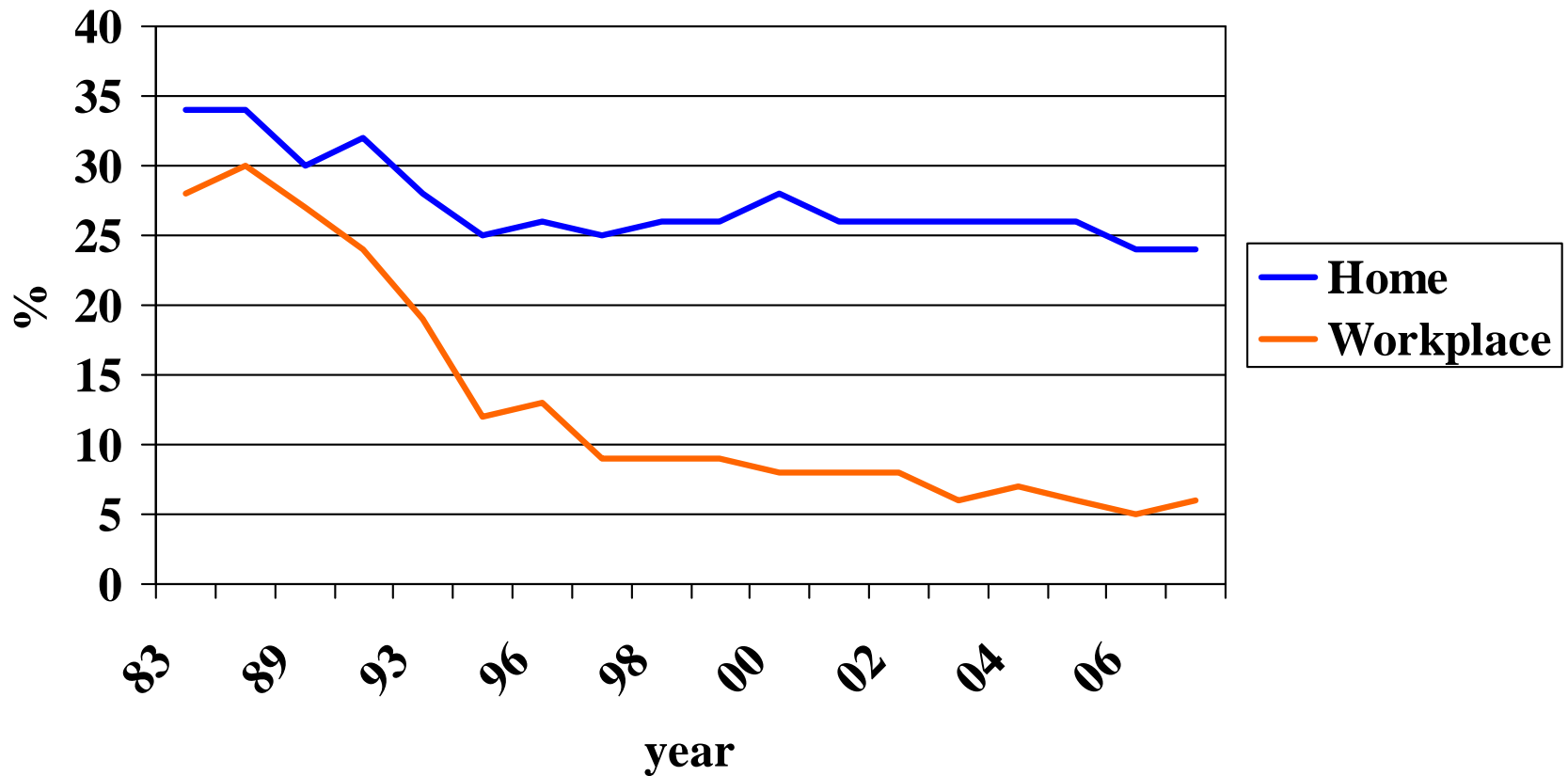
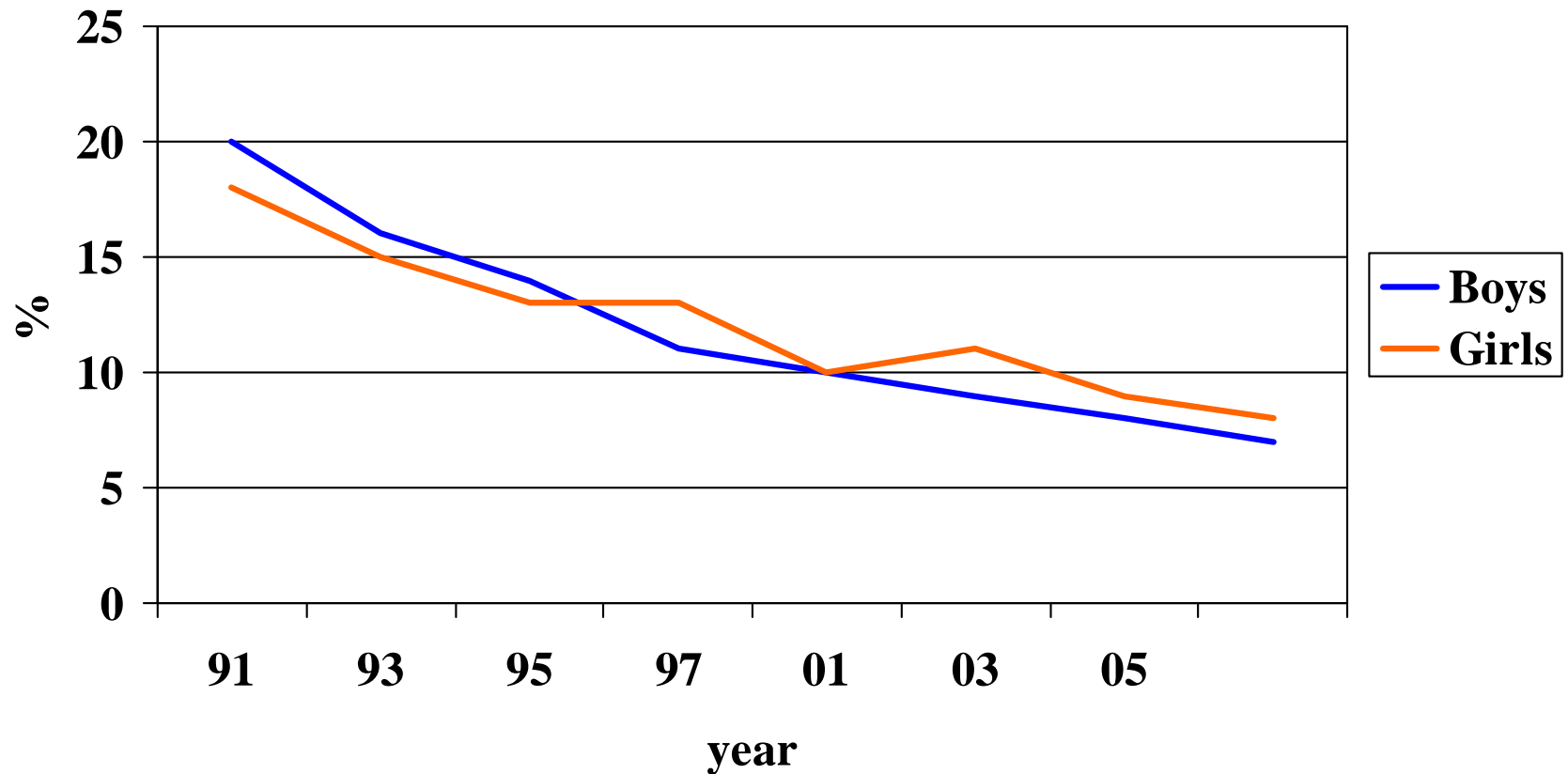


Exposure to environmental tobacco smoke in Finland 1983 - 2007



National Public Health Institute. Health Behaviour and Health among Finnish Adult Population, Spring 2007. Publications B6/2008

Percentage of 12-18-year olds exposed daily to tobacco smoke for at least one hour in 1991-2007, age and sex-adjusted



Rimpelä A, Rainio, Huhtala, Lavikainen, Pere, Rimpelä M. The Adolescent Health and Lifestyle Survey 2007.