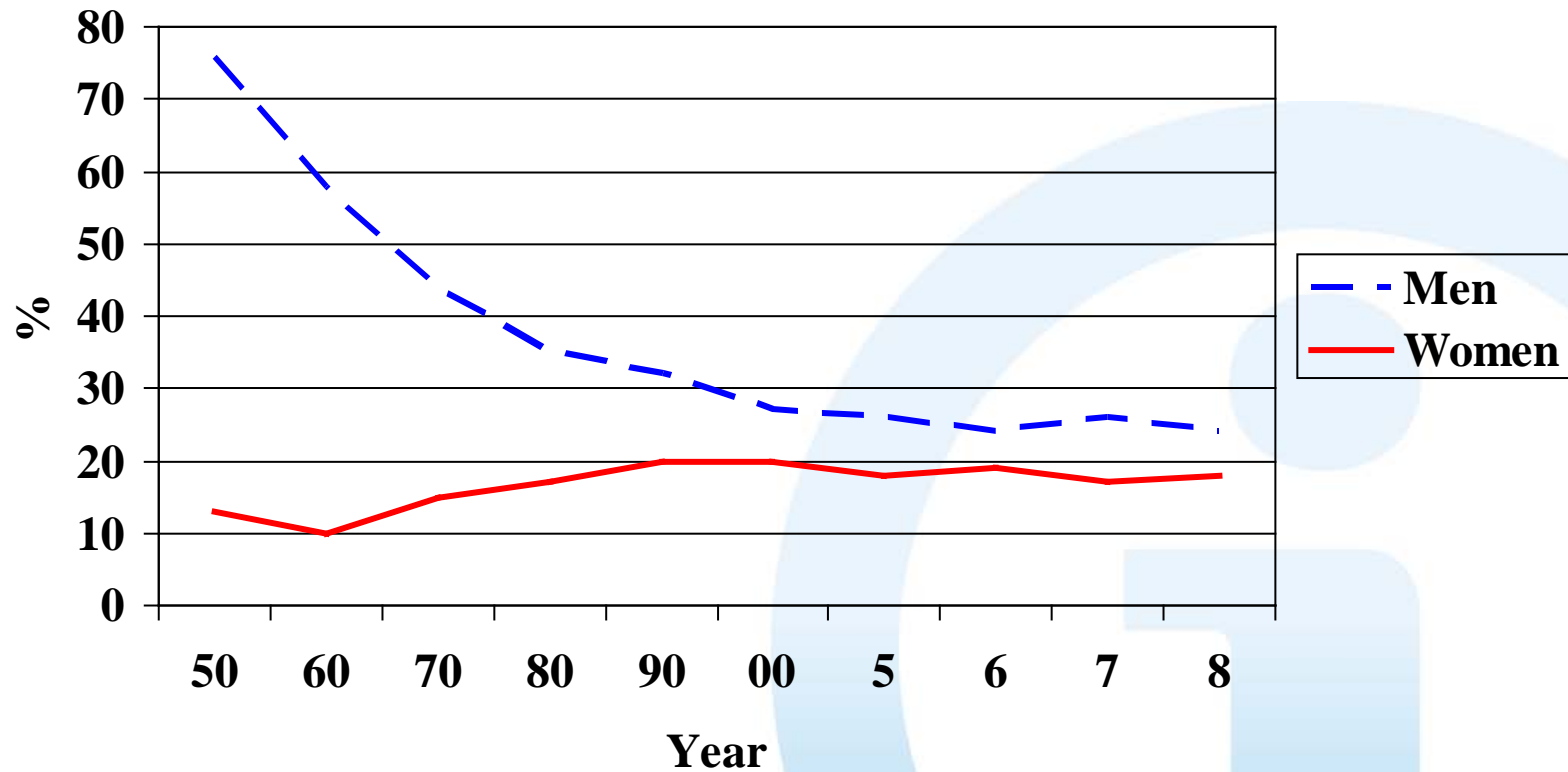


# SMOKING IN FINLAND 2008

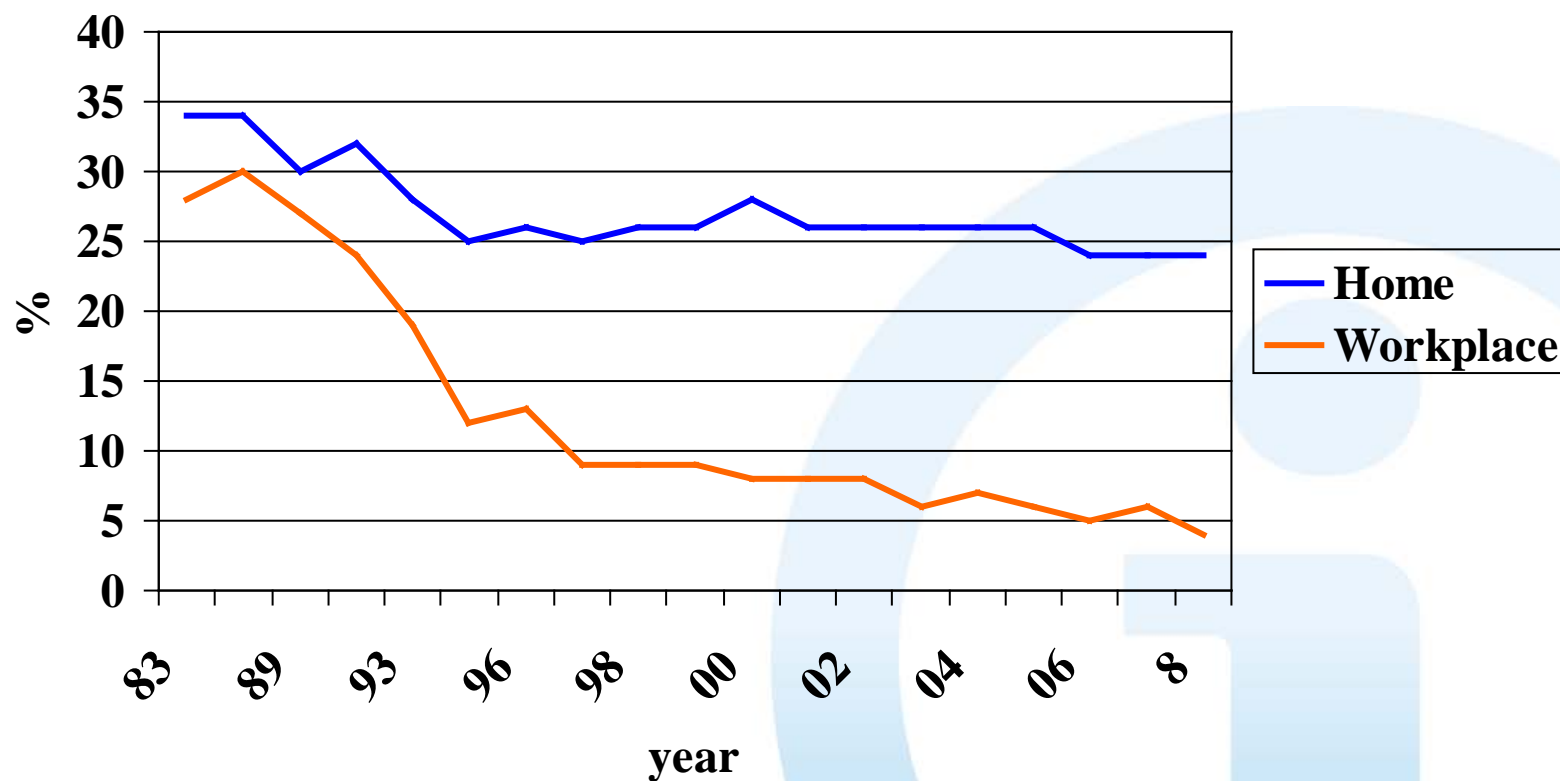
## Proportion of daily smokers (%) 1950-2008, age 15-64



Sources: \* Years -50, -60 and -70: Finnish Gallup

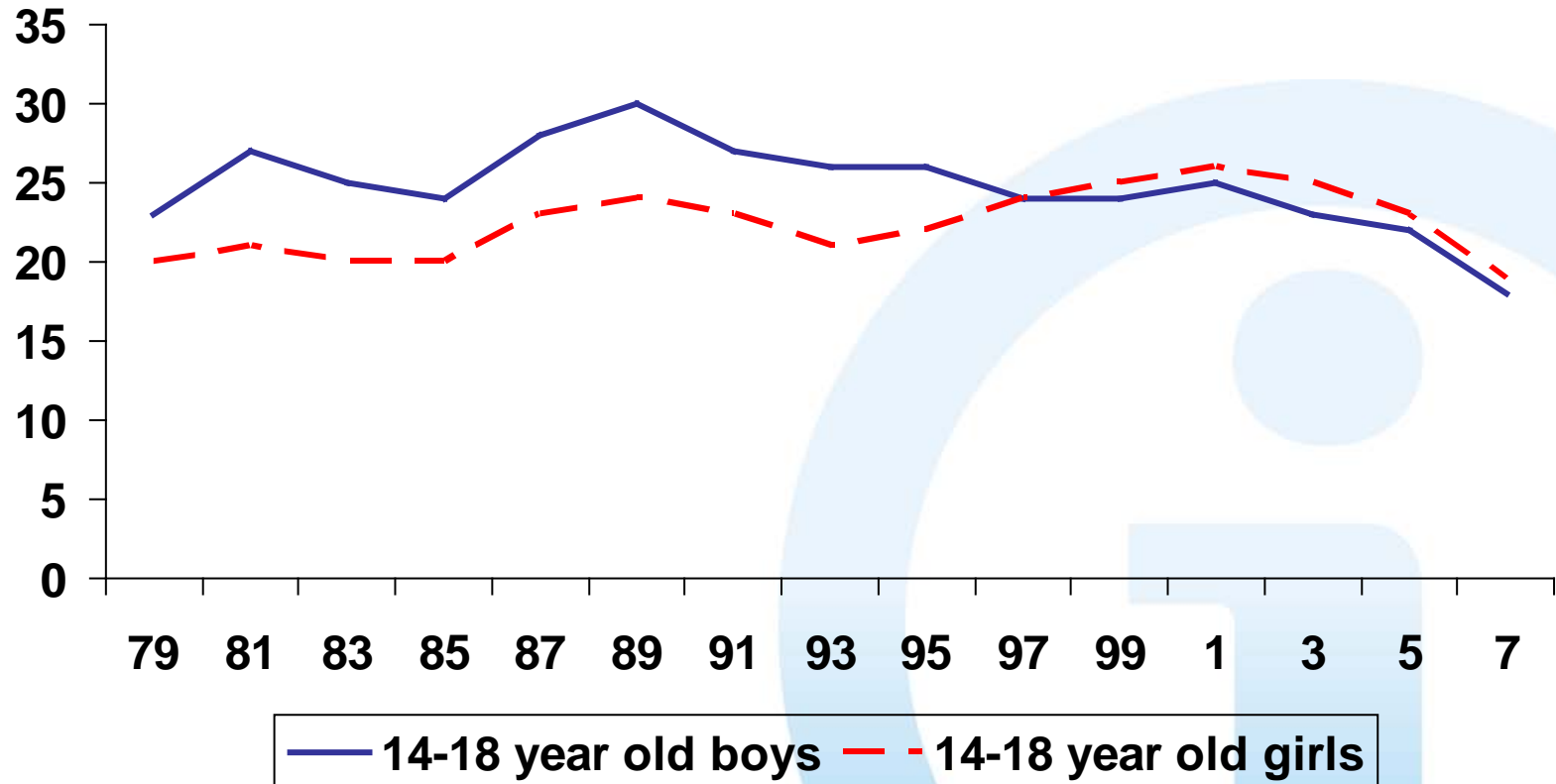
The National Institute for Health and Welfare (THL) . Health Behaviour and Health among the Finnish Adult Population, Spring 2008. Report 2/2009.

# Exposure to environmental tobacco smoke in Finland 1983 - 2008



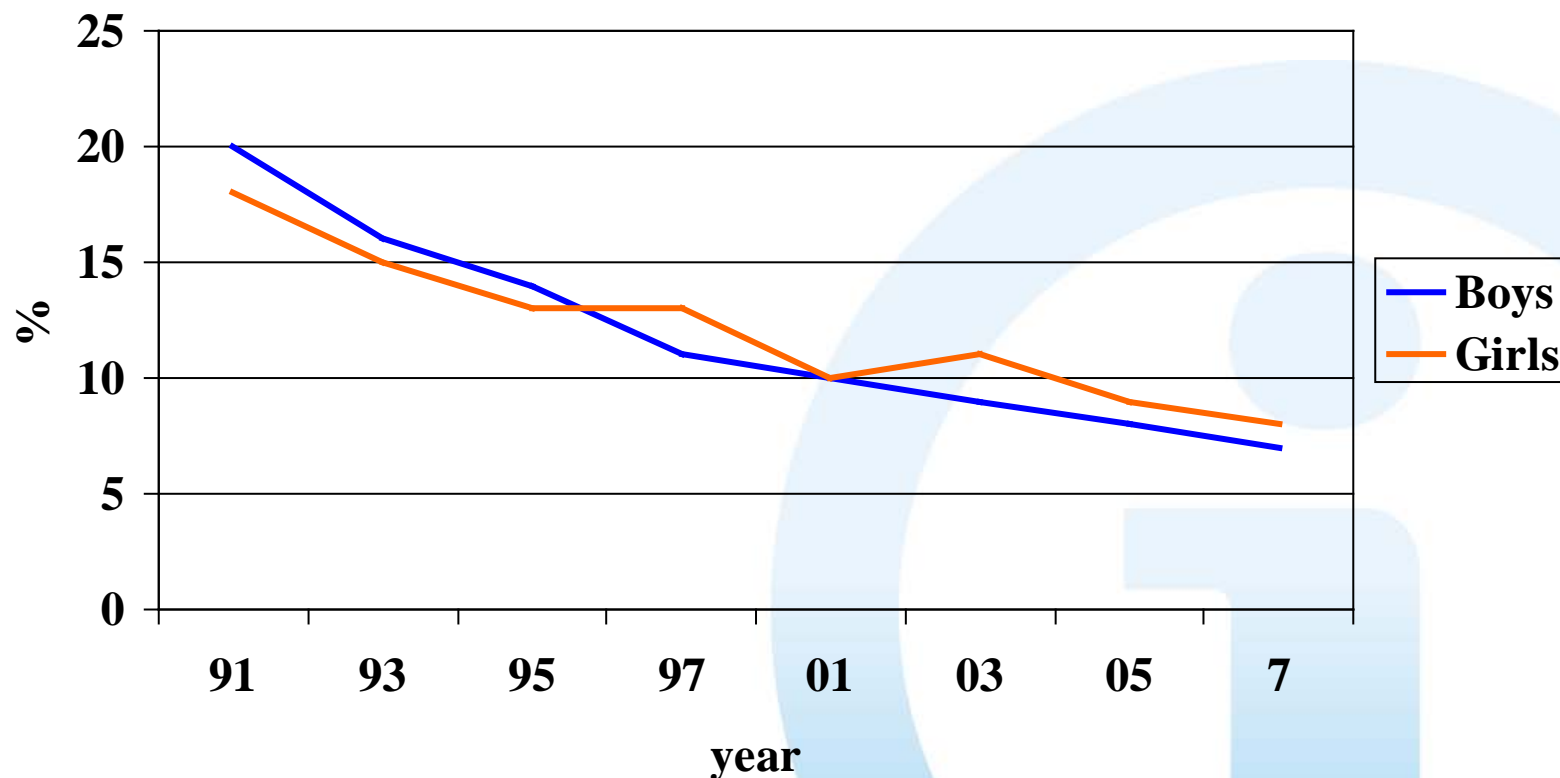
The National Institute for Health and Welfare (THL) . Health Behaviour and Health among the Finnish Adult Population, Spring 2008.  
Report 2/2009.

# Proportion of daily smokers (%) among young people 1979 - 2007



Rimpelä, Rainio, Huhtala, Lavikainen, Pere, Rimpelä. The Adolescent Health and Lifestyle Survey 2007.

## Percentage of 12-18-year olds exposed daily to tobacco smoke for at least one hour in 1991-2007, age and sex-adjusted



Rimpelä A, Rainio, Huhtala, Lavikainen, Pere, Rimpelä M. The Adolescent Health and Lifestyle Survey 2007.